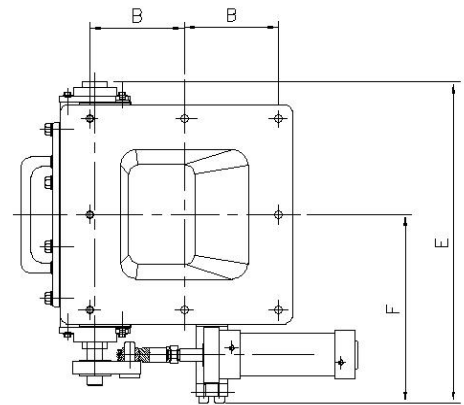
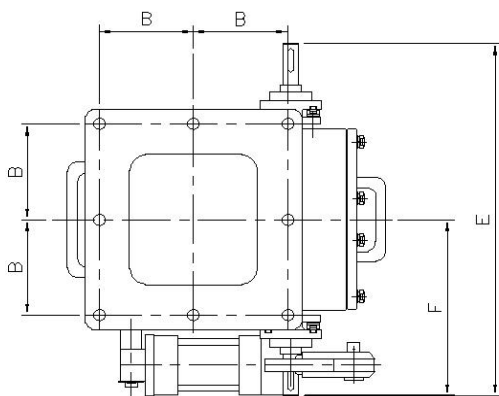
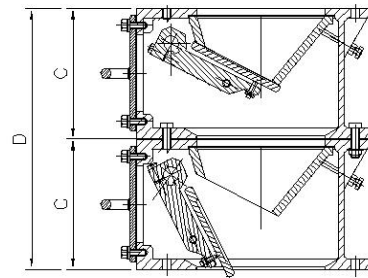
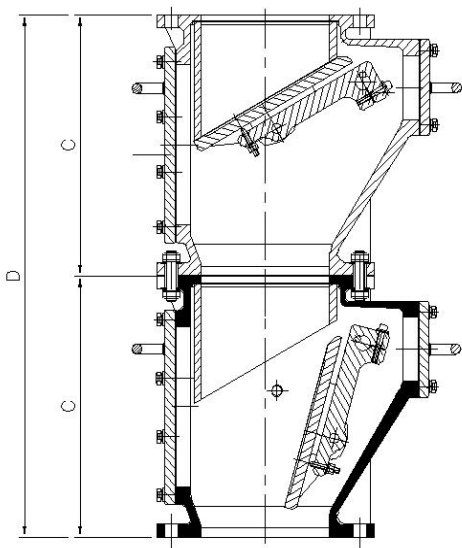


DRAWINGS

SERIES: C401, C402



DATASHEET

SERIES: C401, C402



SERIES C 401

DIMENSIONS IN METRIC: SQ. 200 – SQ. 600					
SIZE	B	~ C	~ D	~ E	~ F
200 X 200	150	203	408	570	295
250 X 250	181	254	510	630	330
300 X 300	226	305	612	670	340
400 X 400	286	406	814	855	450
500 X 500	174	506	816	905	525
600 X 600	260	570	1085	600	1210

DIMENSIONS IN INCHES: SQ. 8” – SQ. 24”					
SIZE	B	~ C	~ D	~ E	~ F
8 X 8	5.9	8.0	13.1	22.4	11.6
10 X 10	7.1	10.0	20.1	24.8	13.0
12 X 12	8.9	12.0	24.1	26.4	13.4
16 X 16	11.3	16.0	32.0	33.7	17.7
20 X 20	6.9	19.9	32.1	35.6	20.7
24 X 24	10.2	22.4	42.7	23.6	47.6

Note:

- Customized sizes can be offered on request.
- Dimensions shown are of pneumatic operated double flap valves.
- For dimensions of pendulum / motorized valve, consult manufacturer.
- Dimensions are approximate and subject to change. Consult manufacturer for actual drawing.

DATASHEET

SERIES: C401, C402



SERIES C 402

DIMENSIONS IN METRIC: SQ. 200 – SQ. 300					
SIZE	B	~ C	~ D	~ E	~ F
200 X 200	150	407	816	550	275
250 X 250	181	457	916	630	315
300 X 300	226	559	1120	710	355

DIMENSIONS IN INCHES: SQ. 8” – SQ. 12”					
SIZE	B	~ C	~ D	~ E	~ F
8 X 8	5.9	16.0	32.1	21.7	10.8
10 X 10	7.1	18.0	36.1	24.8	12.4
12 X 12	8.9	22.0	44.1	28.0	14.0

Note:

- Customized sizes can be offered on request.
- Dimensions shown are of pneumatic operated double flap valves.
- For dimensions related to pendulum / motorized valve, consult manufacturer.
- Dimensions are approximate and subject to change. Consult manufacturer for actual drawing.