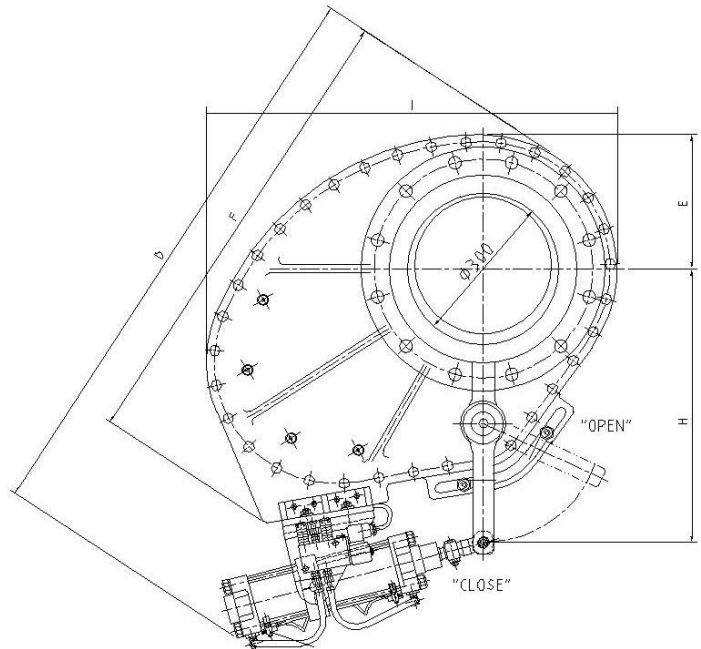
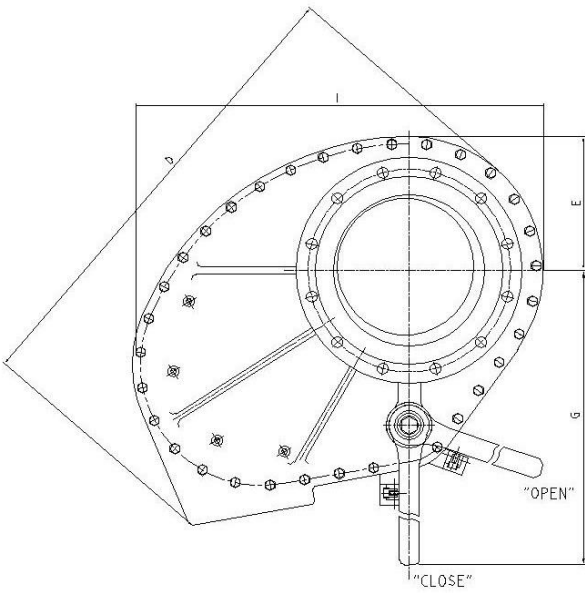
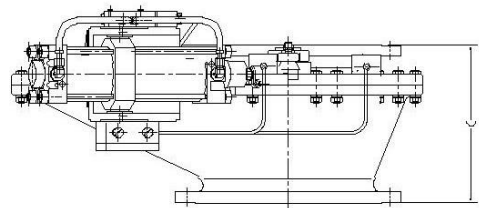
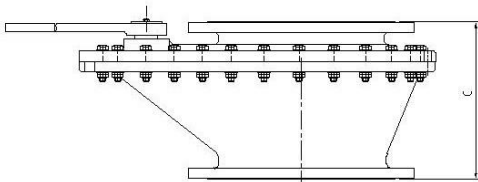


DRAWINGS

SERIES: C301, C311, C312



DATASHEET

SERIES: C301, C311, C312



DIMENSIONS IN METRIC: DN 100 – DN 400									
DN	FLANGE	B	~ C	~ D	~ E	~ F	~ G	~ H	~ I
100	EN 1092 PN10	180	155	740	135	540	475	350	370
	ASME B16.5 #150	190.5	155	740	135	540	475	350	370
150	EN 1092 PN10	240	192	850	155	560	505	402	465
	ASME B16.5 #150	241.5	192	850	155	560	505	402	465
200	EN 1092 PN10	295	240	1015	205	740	660	432	620
	ASME B16.5 #150	298.5	240	1015	205	740	660	432	620
250	EN 1092 PN10	350	290	1040	225	805	680	500	690
	ASME B16.5 #150	362	290	1040	225	805	680	500	690
300	EN 1092 PN10	400	312	1150	265	930	820	625	860
	ASME B16.5 #150	432	312	1150	265	930	820	625	860
350	EN 1092 PN10	460	342	1220	305	1000	875	600	930
	ASME B16.5 #150	476.5	342	1220	305	1000	875	600	930
400	EN 1092 PN10	515	377	1250	310	1100	900	635	985
	ASME B16.5 #150	540	377	1250	310	1100	900	635	985

DIMENSIONS IN INCHES: DN 4" – DN 16"									
DN	FLANGE	B	~ C	~ D	~ E	~ F	~ G	~ H	~ I
4	ASME B16.5 #150	7.5	6.1	29.1	5.3	21.3	18.7	13.8	14.6
6	ASME B16.5 #150	9.5	7.6	33.5	6.1	22.0	19.9	15.8	18.3
8	ASME B16.5 #150	11.8	9.4	40.0	8.1	29.1	26.0	17.0	24.4
10	ASME B16.5 #150	14.3	11.4	40.9	8.9	31.7	26.8	19.7	27.2
12	ASME B16.5 #150	17.0	12.3	45.3	10.4	36.6	32.3	24.6	33.9
14	ASME B16.5 #150	18.8	13.5	48.0	12.0	39.4	34.4	23.6	36.6
16	ASME B16.5 #150	21.3	14.8	49.2	12.2	43.3	35.4	25.0	38.8

Note:

- Dimensions are approximate and subject to change. Consult manufacturer for actual drawing.